

CASE STUDY: Aero

Dash-CAE. END-TO-END DESIGN & PROTOTYPING

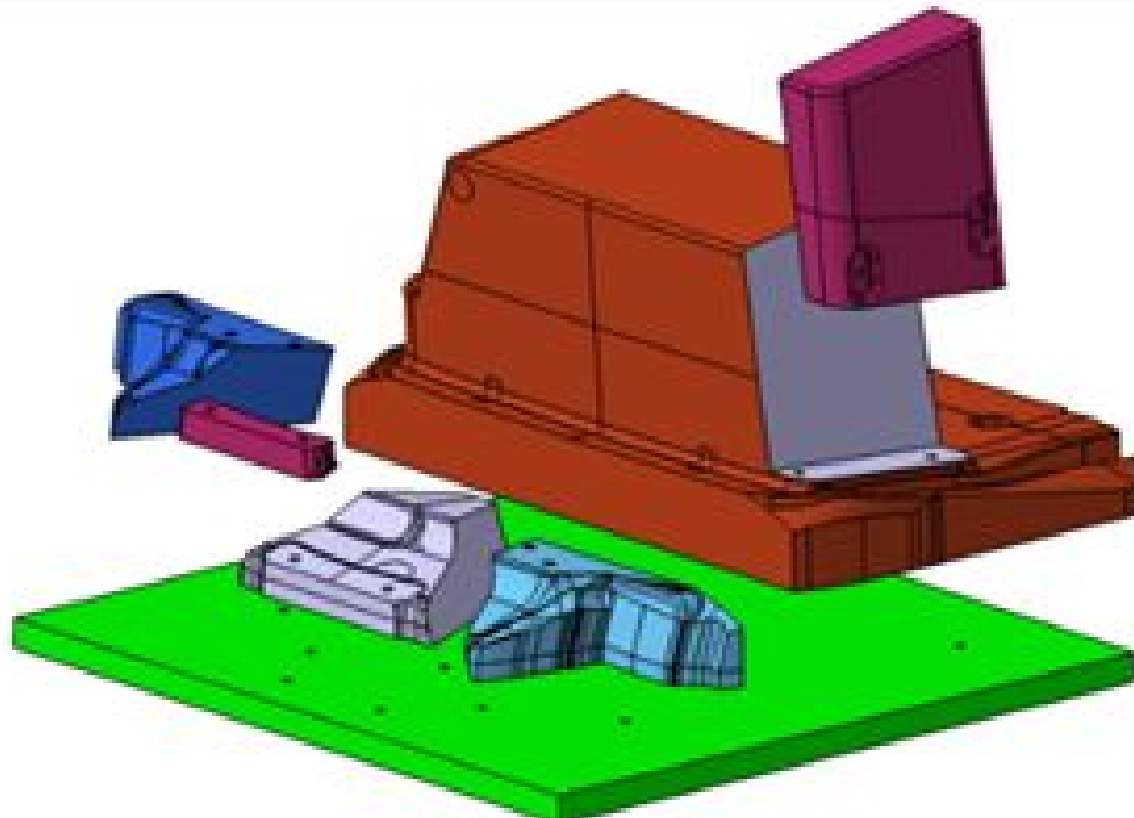
Aero project for leading EV manufacturer.

PROJECT TIME:	2-3 weeks delivery time
---------------	-------------------------

CAPABILITIES:	CAD, CAE design
---------------	-----------------

Project details on following pages...

Example of tooling required to produce lightweight composite parts for EV projects.



Our objective:

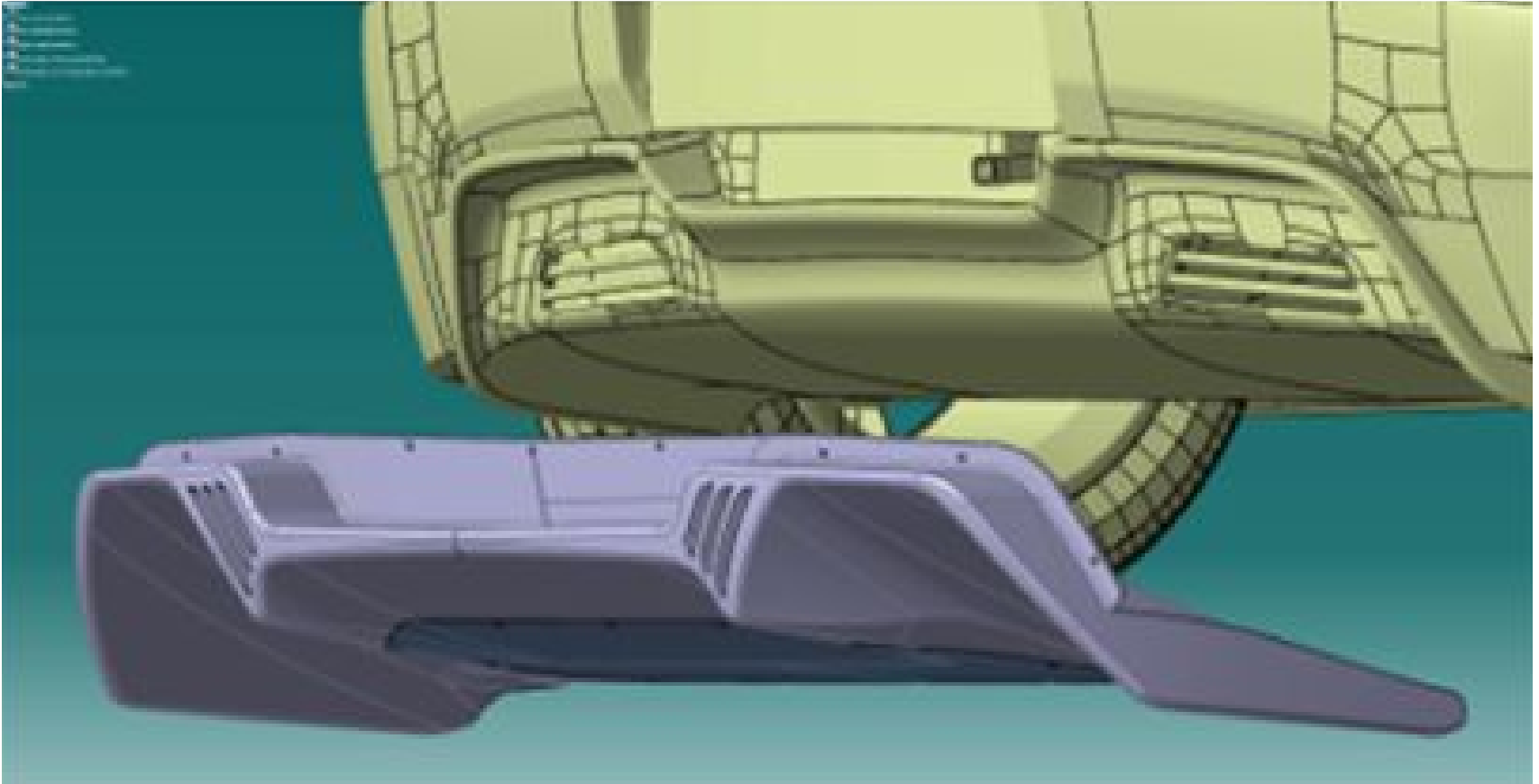
RUN01 Baseline Diffuser



RUN02 Updated Diffuser

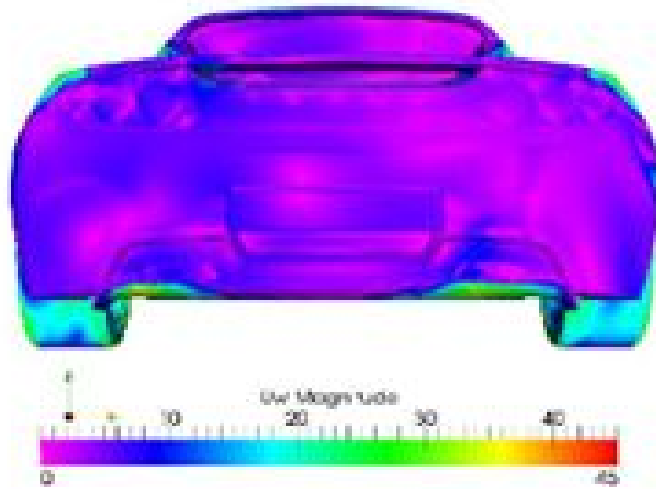


Design and engineer new part (grey vs original yellow)



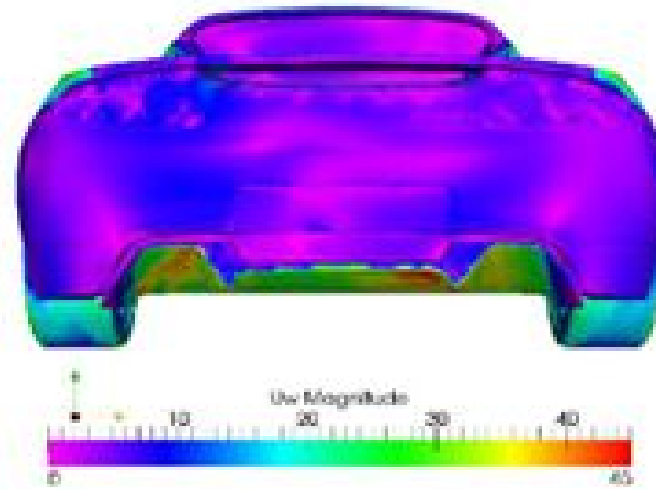
Part

RUN01



Baseline Diffuser, has very little expansion before it curves up to blend to the bumper.

RUN02



Updated diffuser generally remains more attached at this condition.



Project completed in 2-3 weeks



Questions?

Dash-CAE

w. dash-cae.co.uk

e. service@dash-cae.co.uk

t. +44 (0) 1865 244 003

Leading End-to-End Vehicle Design,
Tooling, Rapid Prototyping,
Experimental Manufacture, and
Composites for Aerospace,
Automotive, Defence, and
Motorsport